

Navigable Waters, Pathways, and Lake Water Quality For Year Round Recreational Activities

FOR ALL THE RESIDENTS OF WOODLAND

- A. Background
- B. Neighborhood Issues
- C. Docking Ordinances & Pathways
- D. Shavers Lake Preservation
- E. Consideration for a Plan of Action

Presented by Peter Davis and Cooper Ashley, Residents
April 11, 2005

Excerpts of Opening Comments - to the City Council April 11, 2005

...Cooper and I live on Maple Hill Road. We are long time residents of Woodland and active with respect to Shavers Lake.

We've had little occasion to be in attendance at City Council meetings, and generally little to take issue with. We like Woodland and believe in the spirit of the comprehensive plan. That's why we put down our roots here.

We've also been around long enough to see neighbors square off against one another, usually as a result of some disagreement over something neighborly or just a plain lack of respect which escalates into a lot more.

We are here tonight to introduce you to a new set of considerations, not because there are issues but to avoid them. We are pleased to give you a state of the Lake report and introduce Shavers Lake as an element of Woodland needing your help. We could have filled up this room with passionate people prepared to speak out on these topics.

We appreciate your willingness to let us speak to you, as matters about Shavers Lake are not considered as part of existing dock ordinances and those things effecting all Lake owners.

Many of us have had one standing complaint, a complaint we have taken up with the Mayor about proper notice being given on ordinances being changed. We seem to always find out about them after the fact. This is true is for the "dock ordinance", a subject of your considerable time and energies.

It is our belief that the Council has the responsibility to see that ordinances be considered for the good of all the residents and to see that legislation not be written that is directed at the benefit or harm to individual residents.

Let us introduce to you, some broader considerations, regarding Shavers Lake and then take your questions regarding some ideas for your consideration....

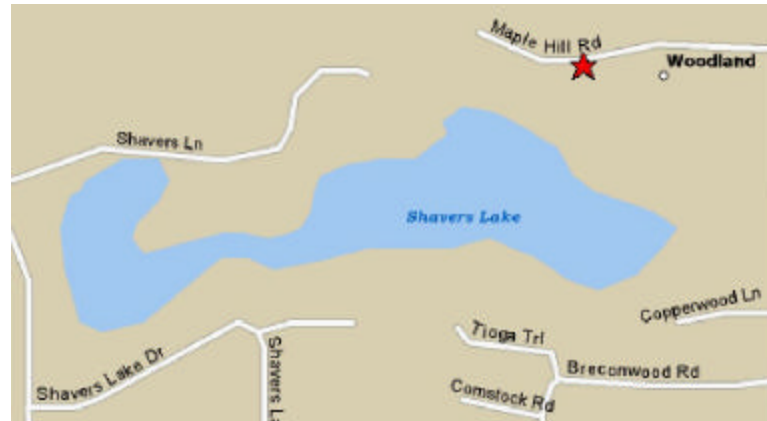
Shavers Lake Background

Constituencies

Homeowners – on and off water
Breconwood Association
City of Deephaven
City of Minnetonka
City of Woodland
DNR
Minnehaha Watershed District

Areas of Opportunity

Navigable Water
Buildup of Organic Plant Material
Thwarting Exotic Invasive Species
The Channel and Pathways
Bird and Bat Houses
Fish Habitat



2005 Planned Activities

Ongoing Maintenance Activities
Water Treatment Programs
Shoreline Maintenance
Mailing List Maintenance
Request For Dredging Proposals
Installation of First Aspirator
Educational Program for Residents

We have lots of constituencies, lots of opportunity for confusion and yet, things have been improving We could do more if the DNR and Watershed district make it easier to do the right things.

Shavers Lake – April 10, 2005 Pictures I

A.



B.



C.



With the ice out on April 4, warm weather has already produced a significant and unsightly algae bloom.. Yes that turtle on top of the muskrat house is saying it all! Muskrat populations are healthy and helpful.

Shavers Lake – April 10, 2005 Pictures II

Channel Looking East

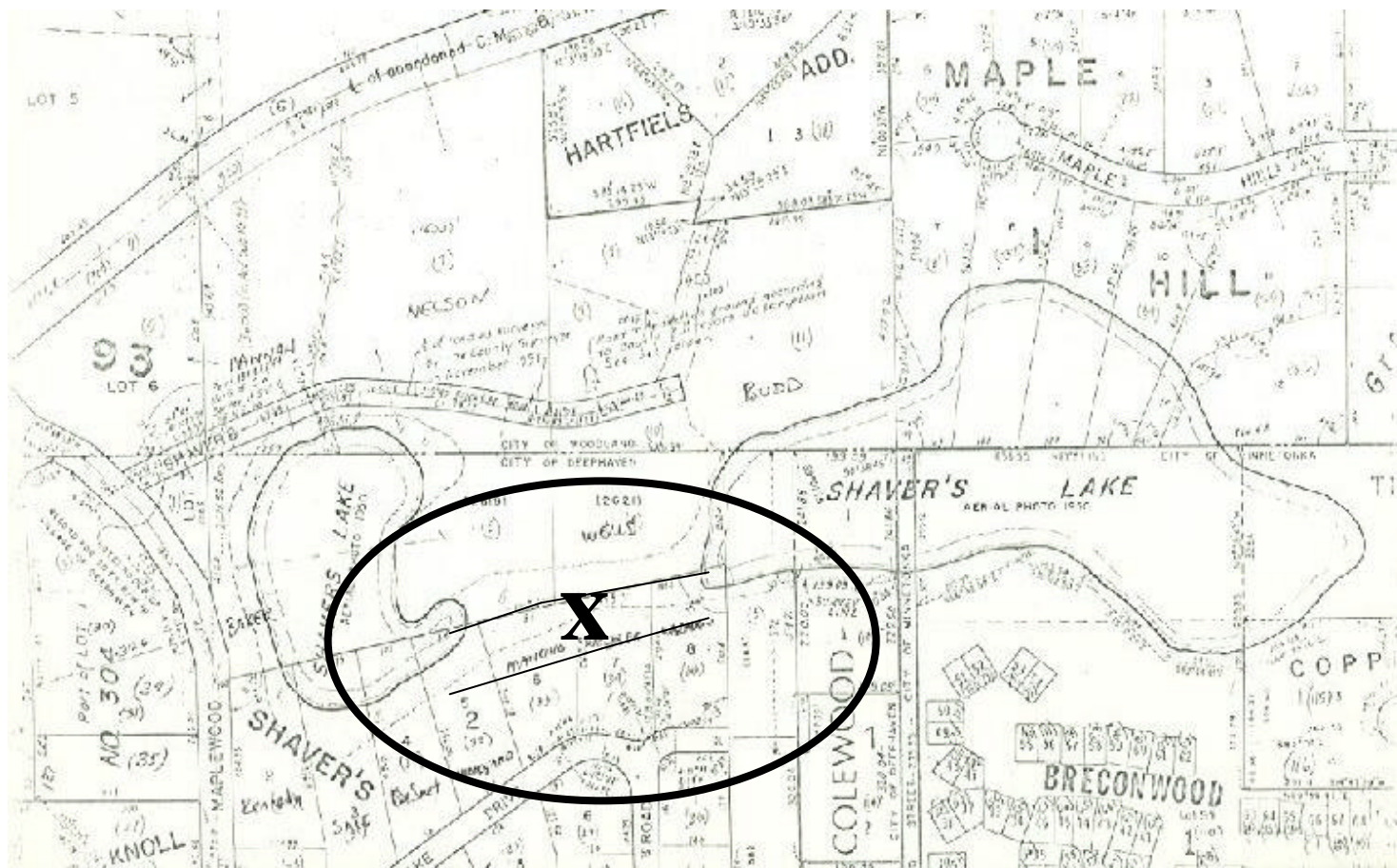


Channel Looking West



We've got channel issues. Woolsey isn't the only channel in the City that needs help from time to time.

Shavers Lake Channel - Out of Date Plat



This is an old plat, dating back to before the Budds subdivided. Getting back and forth is a problem with all of the plant vegetation that has built up on the bottom. Dredging is needed to restore the lake bottom.

Year Round Recreational Usage



*Nature Watching, Skating, Skiing, Sledding, Snowmachines
Paddle Boats, Canoes, Rowboats, Fishing, Limited Hiking*

Yes, fishing. Recent populations peaked two summers ago. The existence of exotic invasive weed species and a lack of oxygen make it hard for fish populations to maintain. The fish attract other animal species and help balance the eco system. But this ecosystem needs our help...

Terra Server Aerial Photo Circa 1991



Navigable depth is an issue. This picture, the exact date is unknown shows the lake at a low. With the generous support of many residents significant maintenance was done that today has enable the lake to be as healthy as it is. Dredging and aspirators are now needed to help maintain the quality of the lake.

Consideration for a plan of action....

- A. Updated docking, channel and pathway ordinances needed which reflect the essential character of the comprehensive plan.
- B. Need city support and influence with governing bodies to ensure public policies reflect the use of up to date technologies and techniques to maintain the public interest consistent with residents needs.
- C. Support and start budgeting for dredging on Shavers Lake too if the City is taking on financial responsibility for access to Woolsey Pond.
- D. Educational program should be started in conjunction with neighborhood groups to ensure lakes and pond water quality / access during all four seasons.

Thank you for the opportunity to introduce the concerns of residents from the south side of Woodland. Property values are directly impacted by the vibrancy of the Lake which we see in as an important element of the comprehensive plan. We appreciate your consideration for support..